

XII. *A Letter from John Huxham M. D. F. R. S. to C. Mortimer M. D. Secr. R. S. containing Observations on the Northern Lights, seen Feb. 15 and 16, 1749-50.*

Dear Sir,

Read June 21, 1750. **Y**OU have herewith an Account of two uncommon *Phænomena*, which I observed last *February*.

Feb. 15, 1749-50, in the Evening there was a very vivid Northern Light, which darted forth several beautiful, crimson, and fiery-colour'd Rays; Wind NWbN 1, Barometer 30.2; 50 Minutes past 8 a surprisngly bright and exceedingly white Arch, about the Breadth of a common Rainbow, appear'd in the Heavens, extending nearly from East to West; it reach'd within 5 or 6 Degrees of the Western Horizon, and ended about 8 or 10 above the Eastern. It pass'd exactly between *Castor* and *Pollux*, and directly over *Aldebaran*, which appeared plainly thro' it. Near the Top of the Arch several very lucid, white, short, vibrating Columns were attached to it; none of them seem'd above 6 or 7 Degrees long, and did not appear to communicate in the least with the *Aurora borealis*. The inclosed Figure (*see TAB. I. Fig. 5.*) somewhat represents it. About 9^h 12' the Arch vanish'd; but several white, bright, coruscating *Nubeculae* remain'd here and there in the Zodiac for 12 or 15 Minutes longer. The *Aurora borealis* continued more or less till Midnight: The next Morning the Wind was E. 1^x, Barom. 30.1.

Feb.

Feb. 16, about 7 *p. m.* we had another *Aurora borealis*, tho' not quite so fiery and luminous as that of the Night before: It continued till near 11. At 8^h 56' *p. m.* exactly, such another Arch appear'd, very nearly of the same Extent and Direction, but not altogether so broad or lucid. This at first also passed between the two bright Stars of *Gemini*, but declin'd more and more to the Southward, till it was 2 or 3 Degrees to the South of *Pollux*. Its Western Limb, about 9, passed through the North Shoulder of *Orion*: It quite disappear'd about 10 or 12 Minutes after. — This had no Columns attach'd to it, as the former; tho' it was somewhat jagged and unequal towards the North near the *Vertex*. The Wind this Evening was E. 2; the Barometer 29.9. The next Morning the Wind was SWbW 1, the Barometer 29.9. Neither any Part of the Arch, or the attached Rays were coloured, but perfectly white, and exceeding bright.

I am, dear Sir, with the greatest Respect,

Plymouth, April 18,
1750.

Your affectionate, and

most obedient humble Servant,

J. Huxham.

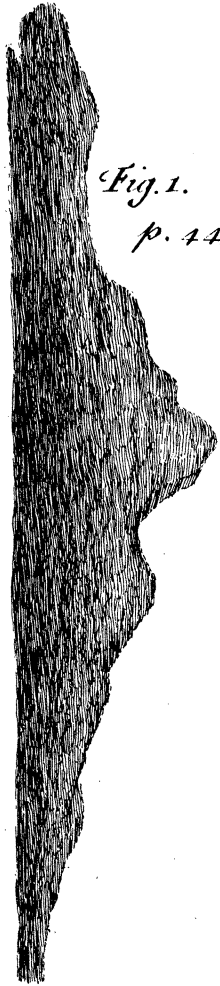


Fig. 1.

p. 443.

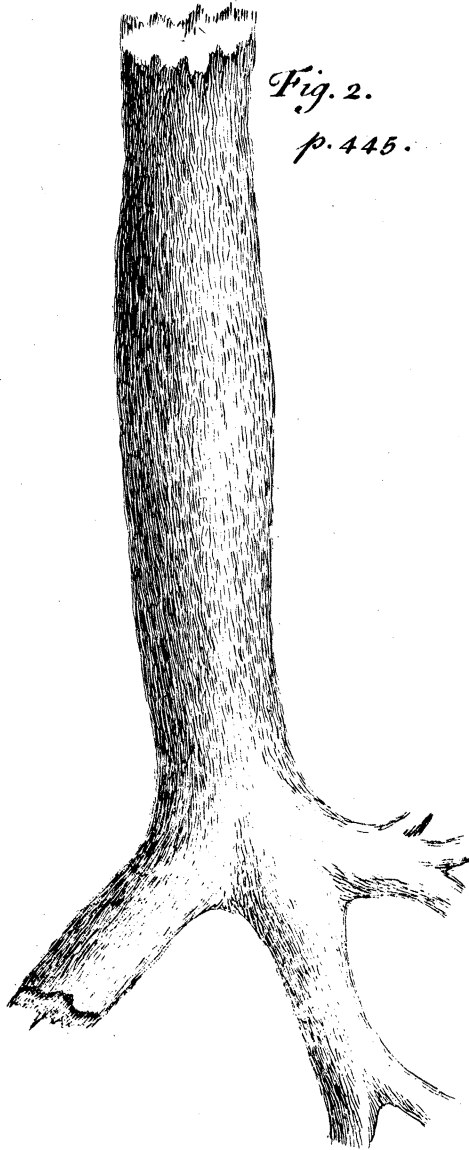


Fig. 2.

p. 445.

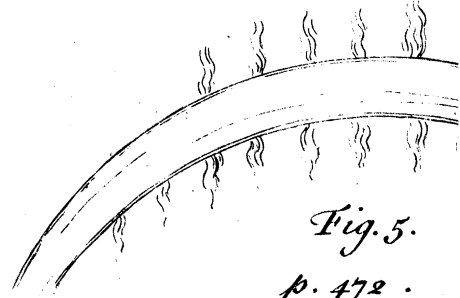


Fig. 5.

p. 472.



Fig. 3.

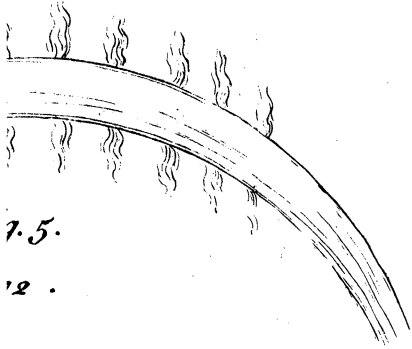
p. 456.

E CIMELIO RE



Fig. 4.

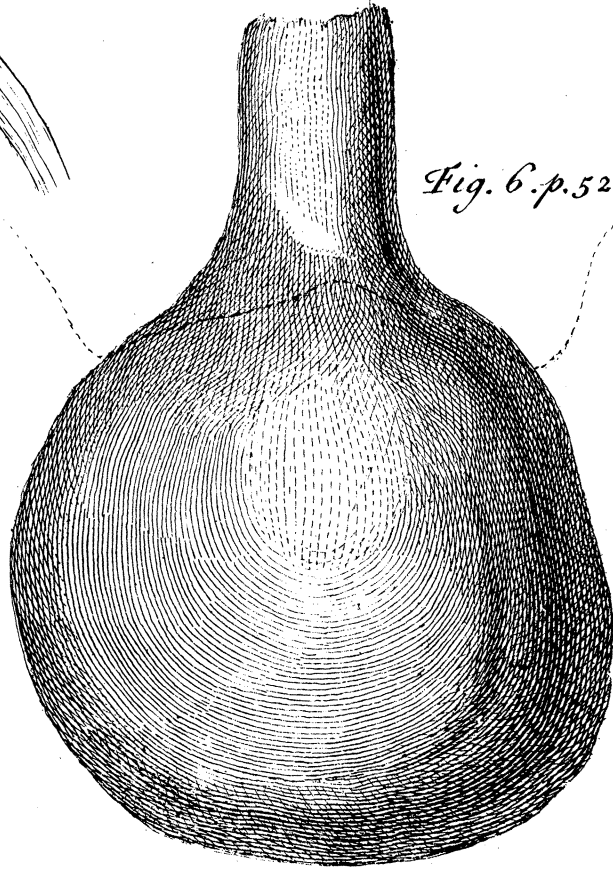
p. 458.



7.5.

12.

Fig. 6. p. 520.



A circular seal or coin. In the center is a standing female figure, possibly a personification of Justice or Liberty, holding a scale and a sword. The text around the border includes "CONCORDIA" on the left and "P. VID" on the right.

9.3.
56.

LIO REGIO

A circular seal or coin. In the center is an eagle with its wings spread, perched on a globe. The text around the border includes "HIPONCIA" on the left and "N. CUM" on the right.

9.4.
58.



Fig. 1.
p. 443.



Fig. 2.
p. 445.

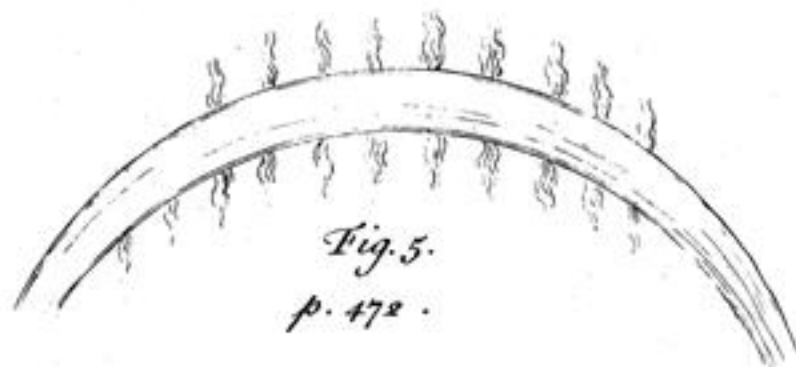


Fig. 5.
p. 472.



Fig. 3.
p. 456.

Fig. 4.
p. 458.

E CIMELIO REGIO

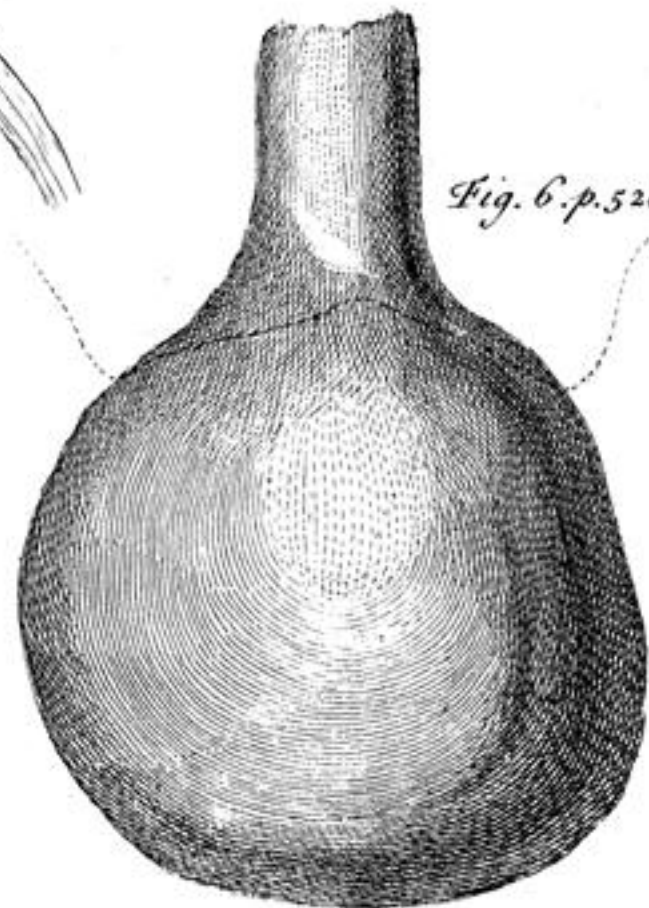


Fig. 6. p. 520.